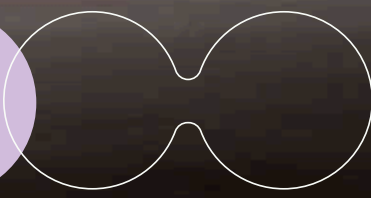
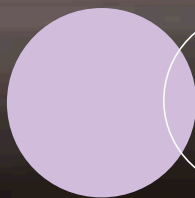




End-to-end solutions for the wind industry

The Kalmar heavy lifters
DRG540A-850A, DRG600Z-1300Z



We've got you covered

No matter where you are in the world or what you need to move, Kalmar can tailor a solution to meet your exact needs.

Knowledge and experience that counts.

With thousands of machines working hard every day, Kalmar understands that one size doesn't fit all, which is why each of our solutions is specified to meet your exact needs. From moving raw materials and components to the final construction and installation of wind towers, we got you covered, end to end with our tailorable solutions.

A world of possibilities.

Dependent on your specific task, you have a choice of reachstackers that are specifically designed to deliver and move your heaviest and largest loads with ease. You can choose from a wide range of drivelines, power sources, wheelbases, lifting capacities and attachments, all built on our global G-Generation platform, which has been proven and tested in the field across a wide range of applications.

No job too challenging.

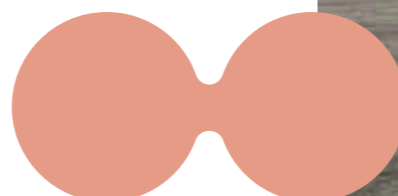
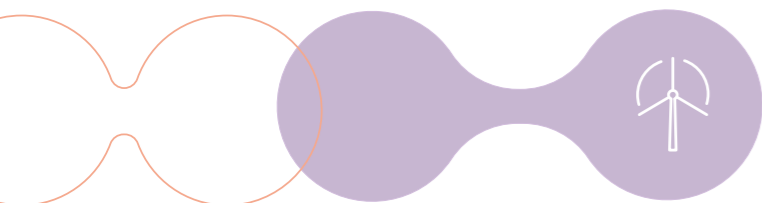
Our range of solutions can lift loads from 54 to 130 tonnes, and up to 260 tonnes when two Super Gloria Reachstackers are working in tandem. If your lifting needs are not covered by our current extensive range of attachments, then talk to us about designing a special attachment to meet your specific lifting needs.

Our end-to-end wind handling solutions are ready to handle:

- Production of main components
- Foundations, tripods and monopiles
- Towers, sections, cones and TPS
- Nacelles, bearings and blades
- Generator, gearbox, hub and rotor
- Hydraulic and electric components
- Containerised assembly parts
- Power cable reels.

We can lift, move, stack and store through every touch point.

- Raw material, supplies and storage
- Material supplies in manufacturing
- Semi-finished components
- Blasting and painting
- Loading and unloading for transports
- Marshalling of project cargo
- Containerised assembly parts
- Power cable reels.



Each of our solutions is specified to meet your exact needs.

The Lift Hook Z-Range of industrial reachstackers

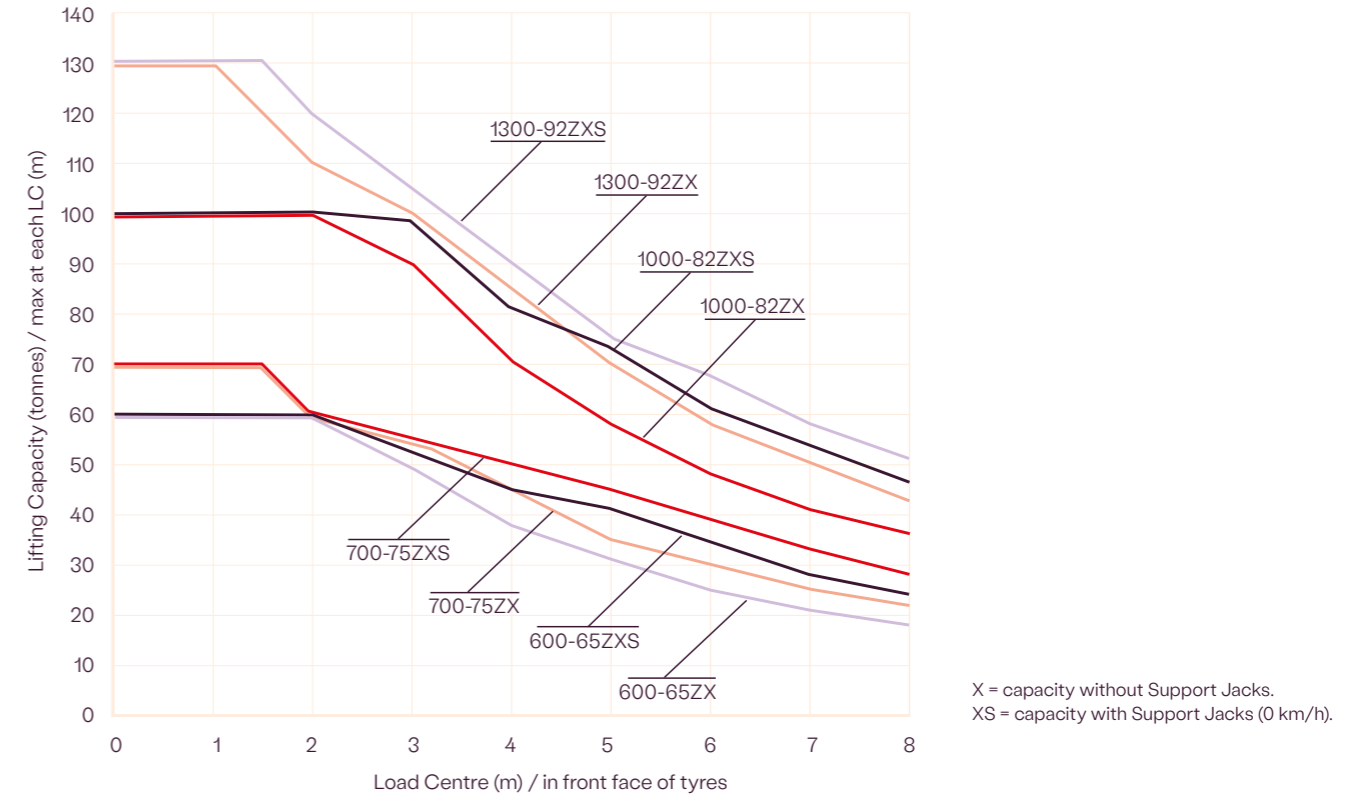
Designed with forged Lifting Hook in single or double version. The Z-Range reachstackers feature:

- Lift capacity (Lift Hook): 60 - 130 tonnes (132 - 286 klbs)
- Lift capacity (4 Lift Eyes): 60 - 130 tonnes (132 - 286 klbs)
- Lift height: up to max 13 m (42ft) / optional up to max 16 m (52ft)
- Load centre: up to max 8 m (26ft)
- Lift Hook / Lift Eyes for slings, chains or beams or sub-attachments
- Lift Hook with free rotation 360-deg (non-power) / no sideshift
- Lift Eyes without rotation (fixed) / no sideshift.

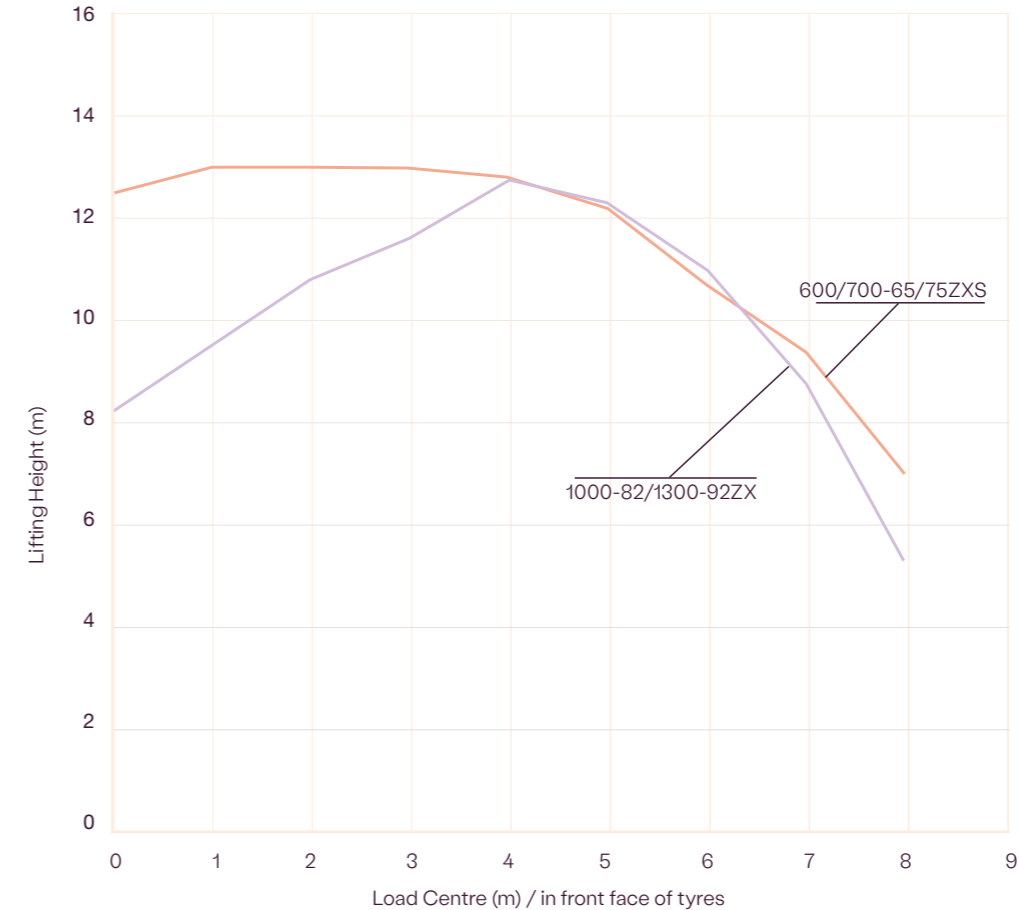


Models	Wheelbases (m / in)	Diesel		Electric
		Premium	Eco	Premium
Lift Hook (Z)				
600-65ZX	6.50 m (256")	●	●	●
600-65ZXS	6.50 m (256")	●	●	●
700-75ZX	7.50 m (295")	●	●	●
700-75ZXS	7.50 m (295")	●	●	●
1000-82ZX	8.25 m (325")	●		
1000-82ZXS	8.25 m (325")	●		
1300-92ZX	9.25 m (364")	●		
1300-92ZXS	9.25 m (364")	●		

Lifting capacity Lift Hook - Lift Eyes / Z-Range



Lifting height Lift Hook - Lift Eyes / Z-Range



HANDLING	Models	600-65ZX		700-75ZX		1000-82ZX		1300-92ZX		
		600-65ZXS		700-75ZXS		1000-82ZXS		1300-92ZXS		
Type of handling		Rotating Lift Hook								
Lifting devices		Lift Hook (1x) / Lift Eyes (4x)								
Rotation, max		Endless (360) / Fixed (0)								
Sideshift, max		N.A.								
LIFTING CAPACITY	Lifting type (I)		Lift Hook (1x)							
	Lift capacity, load center L4-L9	Q1-Q6	tons	60-60-38-25-18	70-60-45-30-22	100-100-70-48-36	130-110-85-58-43			
	Lift capacity, load center L4-L9 (jacks)	Q1-Q6	tons	60-60-45-34-24	70-90-50-39-28	100-100-81-61-46	130-120-90-68-51			
	Load center L4-L9		m	0-2-4-6-8	0-2-4-6-8	0-2-4-6-8	0-2-4-6-8			
	Lifting height, min-max	H4a	mm	1500 - 12800	1500 - 12800	1800 - 12800	1800 - 12800			
	Lifting type (II)			Fixed Lift Eyes (4x)						
Lift capacity, load center L4-L9	Q1-Q6	tons	60-60-38-25-18	70-60-45-30-22	100-100-70-48-36	130-110-85-58-43				
Lift capacity, load center L4-L9 (jacks)	Q1-Q6	tons	60-60-45-34-24	70-90-50-39-28	100-100-81-61-46	130-120-90-68-51				
Load center L4-L9		m	0-2-4-6-8	0-2-4-6-8	0-2-4-6-8	0-2-4-6-8				
Lifting height, min-max	H4b	mm	1500 - 13800	1500 - 13800	1800 - 13700	1800 - 13700				
DIMENSIONS	Tyre dimensions, front and rear		in	18.00x33"	18.00x33"	24.00x35"	24.00x35"			
	Tumber of tyres, front and rear			4 + 2	4 + 2	4 + 2	4 + 2			
	Wheelbase	L3	mm	6500	7500	8250	9250			
	Truck length (to fork face front)	L	mm	11300	12300	12800	13800			
	Truck width (over tires)	B	mm	4150	4150	4900	4900			
	Chassis height, max	H3	mm	4700	4700	5640	5640			
	Service weight		kgs	74000	76000	112000	114000			



Kalmar

www.kalmarglobal.com

Published by Kalmar. Copyright © Kalmar Corporation 2024.
All rights reserved.

